

VERSA STEEL

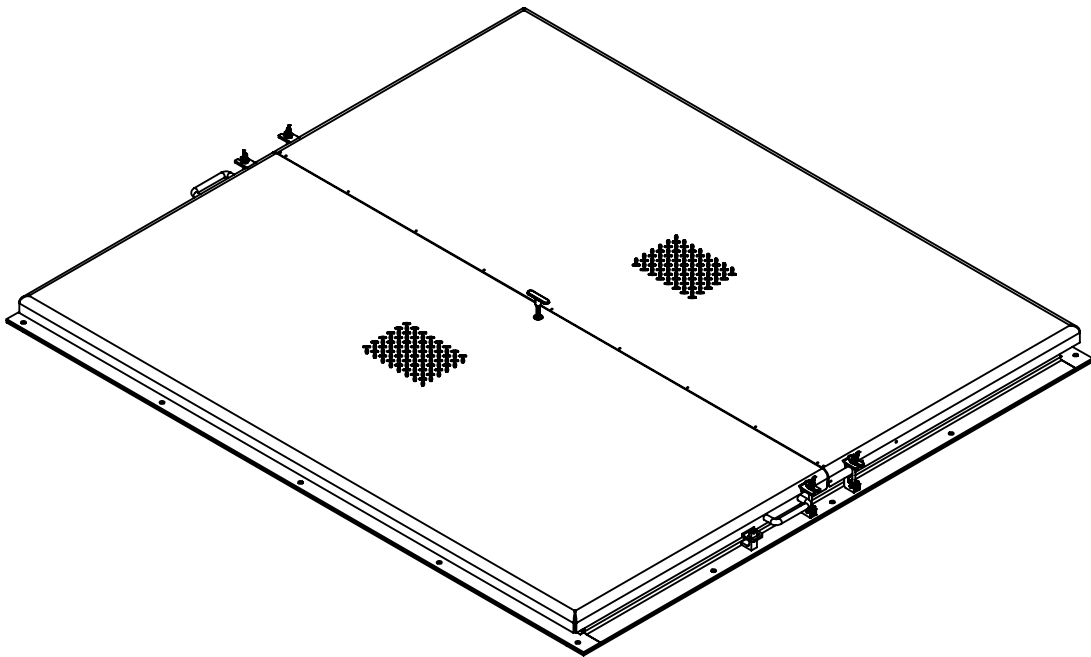
Approval Drawings

HATCH ASSEMBLY, DOUBLE LEAF 84 X 96

Assembly No.:VSH-150-A-84-96-DL-GS

ASSEMBLY NO./PART NUMBER KEY:

VSH= VERSA STEEL INC. HATCH
150 = 200 P.S.F. RATED
A= ALUMINUM CONSTRUCTION
30-30= SIZE INTERIOR OPENING
DL = DUAL LEAF LONG SERIES
GS= GAS SPRING
NS= NO SPRING ASSIST

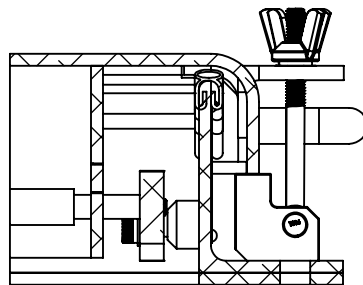
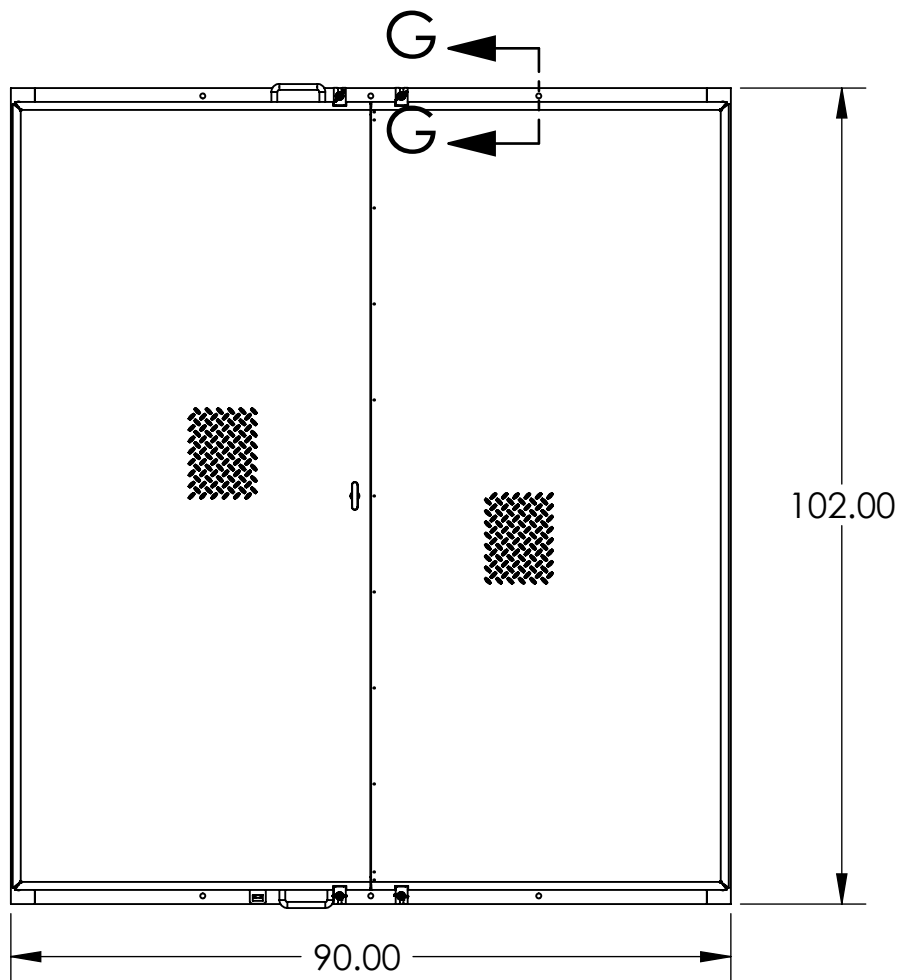


GENERAL SPECIFICATIONS:

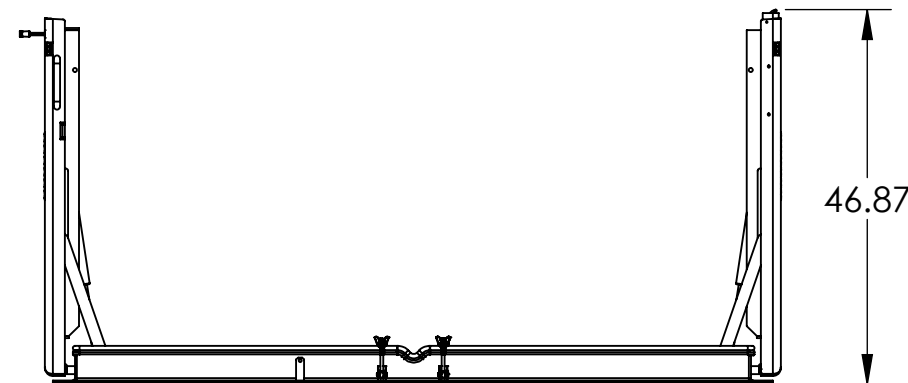
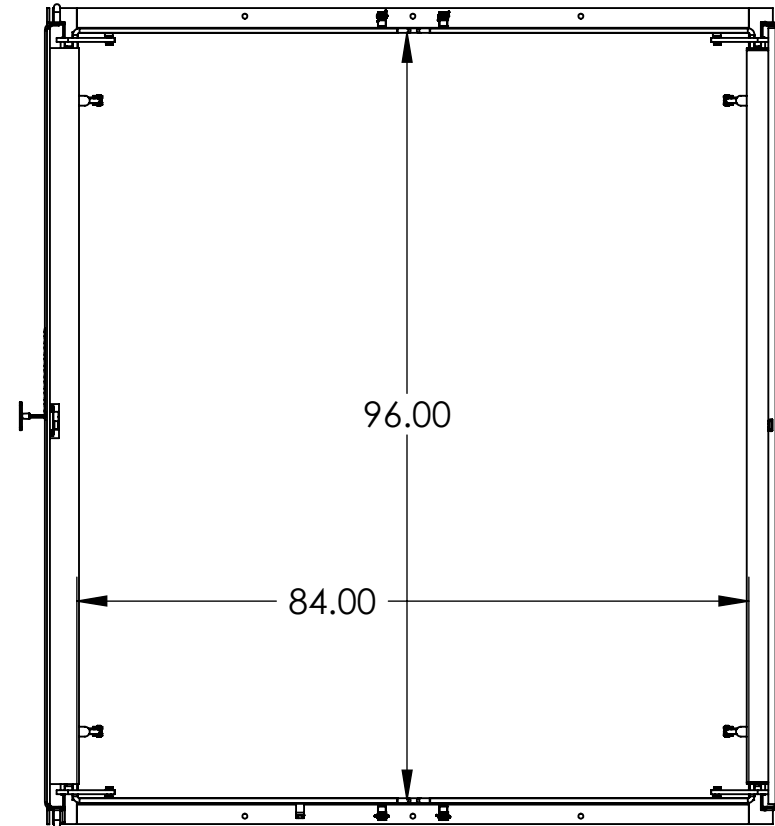
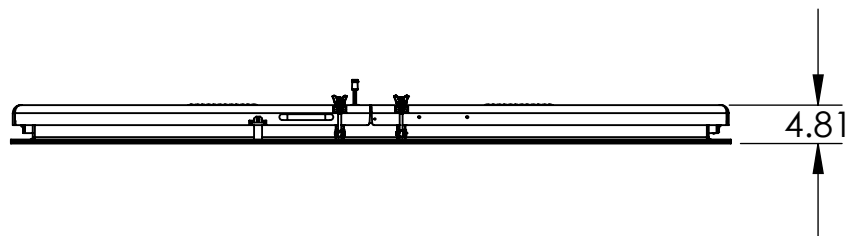
1. UNIT IS WEATHER PROOF WITH CONTINUOUS BULB SEAL ON LID TO FRAME AND 1/4" X 3" WIDE FRAME TO CURB SEALS.
2. LID OVER LAPS FRAME A MINIMUM OF 2 INCHES.
3. FRAME IS A MINIMUM OF 4" ABOVE THE CURB.
4. LID IS HINGED ON SIDE WITH TAMPER PROOF SCREWS . THERE ARE A MINIMUM OF THREE SWING BOLT HOLD DOWNS TO SECURE THE HATCH FOR WEATHER PROOF SEAL.
5. HATCH IS DESIGNED FOR 150 P.S.F. LOAD.
6. THERE ARE 8 EXTERIOR ATTACHMENT POINTS FOR 1/2" FASTENER. THERE IS A FULL FACE GASKET OF 3" WIDE CLOSED CELL FOAM EPDM BETWEEN FRAME AND CURB.
7. LID IS A 1/4" 5086 FORMED ALUMINUM TREAD PLATE.
8. ALL FASTENERS AND HARDWARE ARE 316 STAINLESS STEEL.
9. ONE COAT OF BLACK BITUMINOUS PAINT ON THE INSIDE OF FRAME WHERE IT CONTACTS CURBING CONCRETE.

THIS DOCUMENT CONTAINS PROPRIETARY, TRADE SECRET INFORMATION THAT IS THE PROPERTY OF VERSA STEEL, INC. THE INFORMATION CONTAINED IN THIS DOCUMENT, INCLUDING THE PRINCIPLE OF DESIGN, MAY NOT BE USED OR COPIED, IN WHOLE OR IN PART, WITHOUT THE EXPRESS PRIOR WRITTEN CONSENT OF VERSA STEEL, INC.

| | | | | | |
|---|--|--|--|---------------------------------|--|
| VERSASHEET, INC. 1618 NE FIRST AVENUE PORTLAND, OREGON 97232 (503)287-9822 FAX (503)-287-7483 | | G F E D C B A | | REV ISSUED FOR DATE BY | |
| DRAWN BY E.BAILIFF | | DATE 2009-08-05 | | CHECKED BY | |
| APPROVED BY | | PART NUMBER VSH-150-A-84-96-DL-GS | | SUPPLIER | |
| SCALE 1:24 | | DRAWING NO. VSH-150-A-84-96-DL-GS-SPE | | REVISION NO. A | |
| SHEET NO. 1 | | OF | | 2 | |



SECTION G-G
SCALE 1 : 4



NOTES:
PN: VSH-150-A-84-96-DL-GS
DESC: HATCH ASSEMBLY, DOUBLE LEAF 84 X 96
MATRL:
EST. WT:
FINISH:
NOTE: ERROR!:note
CAD FILE: VSH-150-A-84-96-DL-GS-SPEC

THIS DOCUMENT CONTAINS PROPRIETARY, TRADE SECRET INFORMATION THAT IS THE PROPERTY OF VERSA STEEL, INC. THE INFORMATION CONTAINED IN THIS DOCUMENT, INCLUDING THE PRINCIPLE OF DESIGN, MAY NOT BE USED OR COPIED, IN WHOLE OR IN PART, WITHOUT THE EXPRESS PRIOR WRITTEN CONSENT OF VERSA STEEL, INC.

| | | | | | | | | | | | |
|-------------------------------------|--|-----------------------|--|-------------|--|---------------------------|--|--------------|--|-----------|--|
| MATERIAL | | PART NUMBER | | SCALE | | DRAWING NO. | | REVISION NO. | | SHEET NO. | |
| FINISH | | VSH-150-A-84-96-DL-GS | | 1:24 | | VSH-150-A-84-96-DL-GS-SPE | | A | | 2 OF 2 | |
| SHEET TITLE | | SUPPLIER | | | | | | | | | |
| HATCH ASSEMBLY, DOUBLE LEAF 84 X 96 | | | | | | | | | | | |
| PART NUMBER: VSH-150-A-84-96-DL-GS | | | | | | | | | | | |
| DRAWN BY | | DATE | | APPROVED BY | | REV | | ISSUED FOR | | DATE | |
| E.BAILIFF | | 2009-08-05 | | | | G | | | | | |
| CHECKED BY | | | | | | F | | | | | |
| | | | | | | E | | | | | |
| | | | | | | D | | | | | |
| | | | | | | C | | | | | |
| | | | | | | B | | | | | |
| | | | | | | A | | | | | |

VERSA STEEL, INC.
1618 NE FIRST AVENUE
PORTLAND, OREGON 97232
(503)287-9822
FAX (503)-287-7483